



office space for lease

location

Central Raleigh submarket, at the intersection of West Jones and North West Street

building size

25,905 SF

availability

Suite 220 +/- 1,264 SF

rate

\$25.00 psf full service

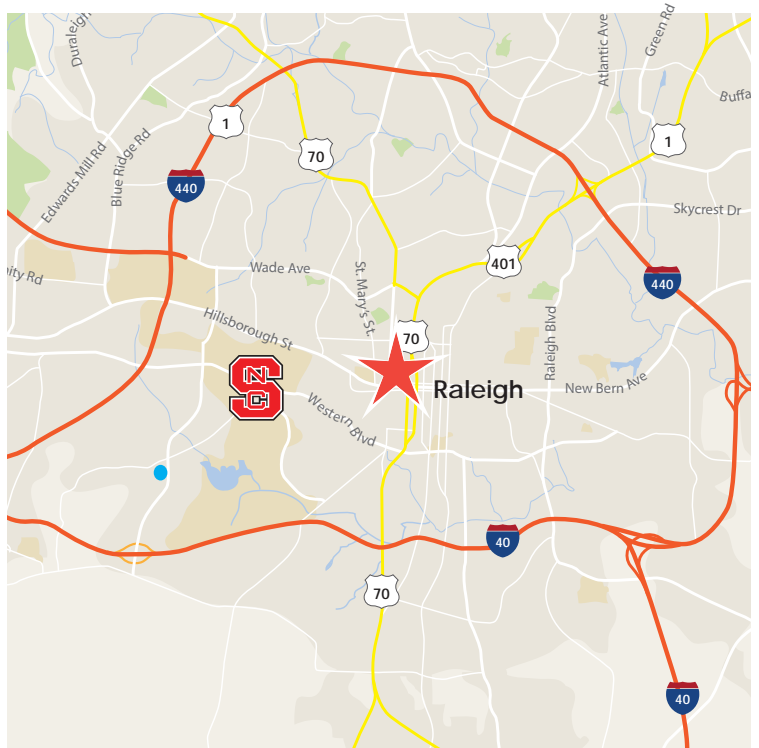
additional details

Corner suite with open floor plan

Designated parking with a ratio of 4:1,000 SF (included in rate)

Walking distance from Campbell University, Warehouse District, Hillsborough street, and Glenwood South

On site amenities include Tobacco Road and Clouds Brewing



FOR MORE INFO, PLEASE CONTACT:

BRIAN WALLACE

direct 919 645 2773

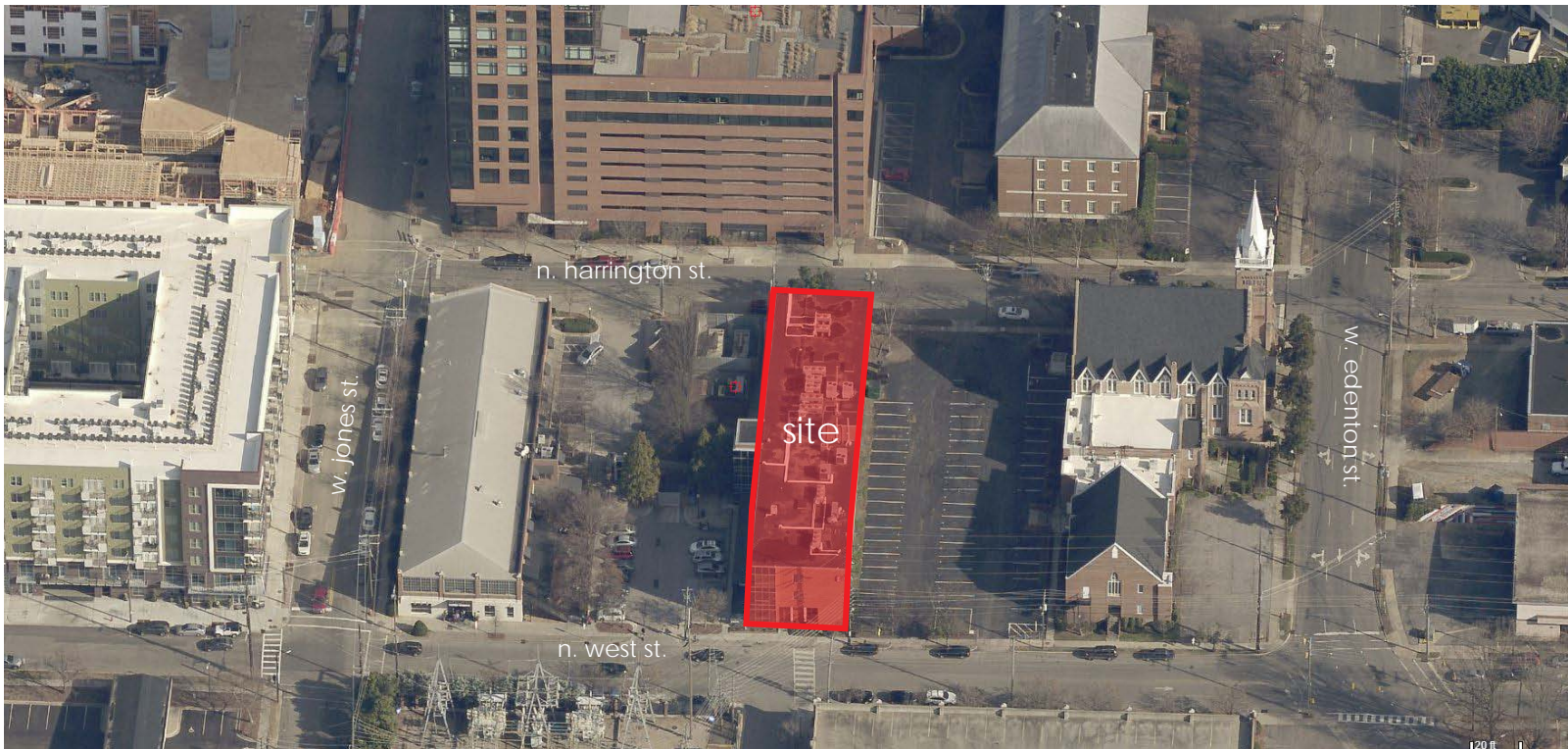
brianwallace@yorkproperties.com

This information has been secured from sources we believe to be reliable, but York Properties, Inc. of Raleigh makes no representations or warranties, expressed or implied, as to the accuracy of the information.

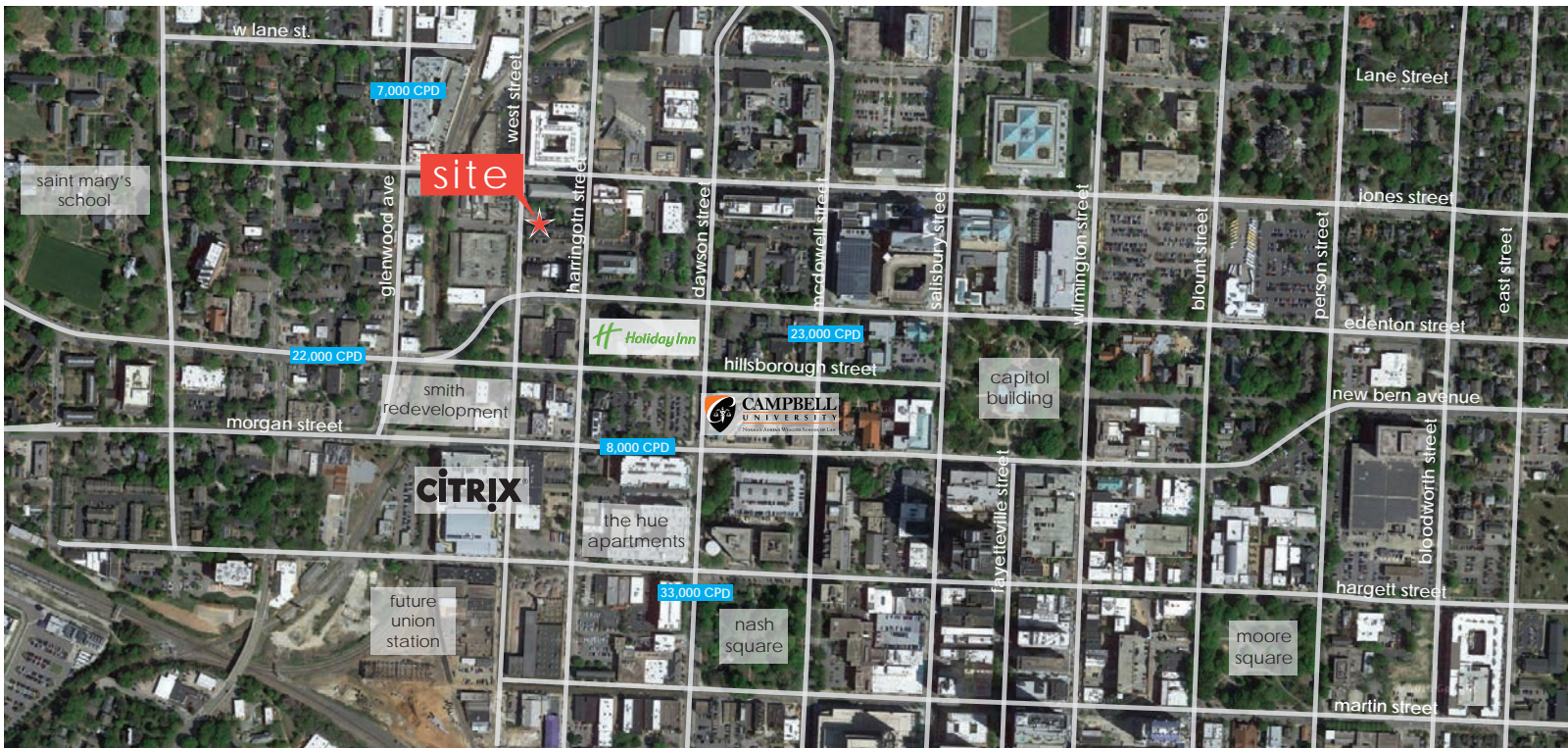
YORK PROPERTIES, INC.

2108 Clark Avenue
Raleigh NC 27605

birds eye aerial



aerial



FOR MORE INFO, PLEASE CONTACT:

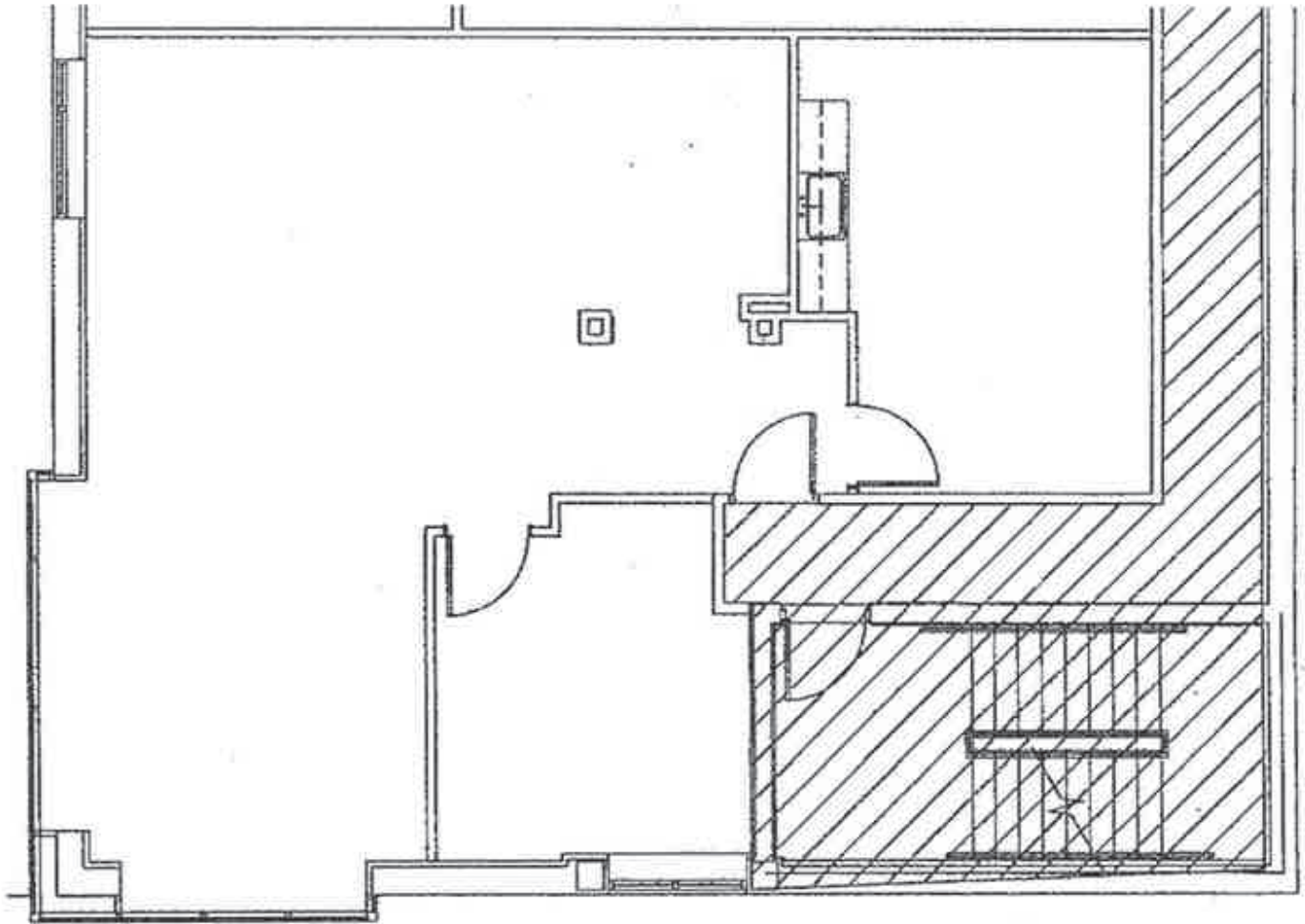
BRIAN WALLACE
direct 919 645 2773
brianwallace@yorkproperties.com

This information has been secured from sources we believe to be reliable, but York Properties, Inc. of Raleigh makes no representations or warranties, expressed or implied, as to the accuracy of the information.

YORK PROPERTIES, INC.
2108 Clark Avenue
Raleigh NC 27605

suite 220
+/- 1,264 SF

AVAILABLE IMMEDIATELY



FOR MORE INFO, PLEASE CONTACT:

BRIAN WALLACE

direct 919 645 2773

brianwallace@yorkproperties.com

This information has been secured from sources we believe to be reliable, but York Properties, Inc. of Raleigh makes no representations or warranties, expressed or implied, as to the accuracy of the information.

YORK PROPERTIES, INC.

2108 Clark Avenue
Raleigh NC 27605

submarket overview

powerhouse square

The historic Powerhouse Square is located within the Downtown Raleigh Submarket and is situated in the Glenwood South District. One of downtown's signature streets anchors this eclectic mix of restaurants, art galleries, stores, nightlife and residences. With over 600 units under construction or recently delivered and more on the way, Glenwood South will build on its existing residential base to become one of downtown's most distinctive neighborhoods. Raleigh's strong job growth, commercial and residential developments and significant public projects have helped establish a competitive edge as evident by this neighborhood's success.



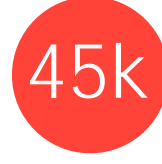
8k population
2017 estimated population
in downtown Raleigh



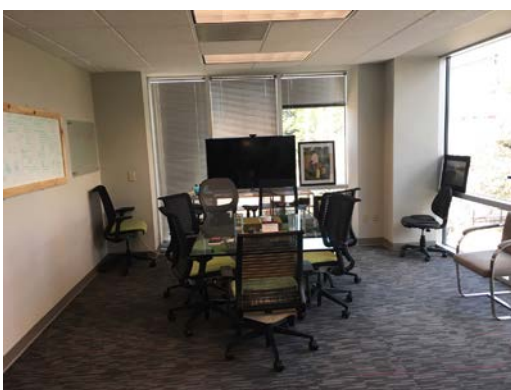
800 businesses
located in downtown



32.8 median age



45k employees
in downtown



FOR MORE INFO, PLEASE CONTACT:

BRIAN WALLACE

direct 919 645 2773

brianwallace@yorkproperties.com

This information has been secured from sources we believe to be reliable, but York Properties, Inc. of Raleigh makes no representations or warranties, expressed or implied, as to the accuracy of the information.

YORK PROPERTIES, INC.

2108 Clark Avenue
Raleigh NC 27605